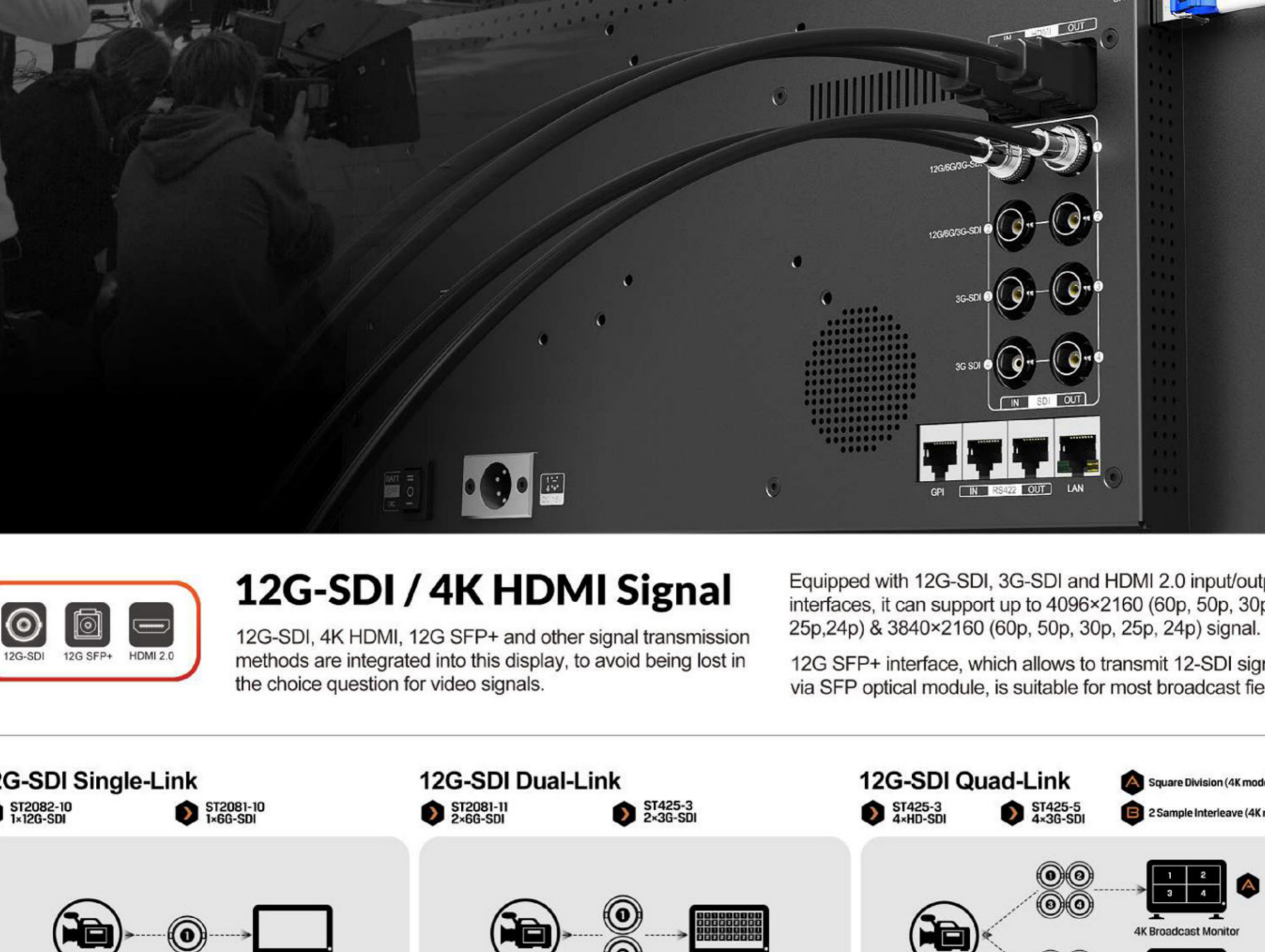


12G-SDI Studio / Broadcast Monitor



12G-SDI / 4K HDMI Signal
 Equipped with 12G-SDI, 3G-SDI and HDMI 2.0 input/output interfaces. It can support up to 4096x2160 (60p, 50p, 30p, 25p, 24p) & 3840x2160 (60p, 50p, 30p, 25p, 24p) signal.
 12G SFP+ interface, which allows to transmit 12-SDI signal via SFP optical module, is suitable for most broadcast field.

12G-SDI Single-Link **12G-SDI Dual-Link** **12G-SDI Quad-Link**



12G-SDI Single-Link: ST2082-10 1-100-SDI, ST2081-10 1-60-SDI
 12G-SDI Dual-Link: ST2081-11 2-60-SDI, ST425-3 2-30-SDI
 12G-SDI Quad-Link: ST425-3 4-60-SDI, ST425-5 4-30-SDI

Supports 4K (4K mode) and 2 Sample Interleave (4K mode) 4K Broadcast Monitor

Accurate Color Calibration

A specific calibration to reproduce the colors of the image color space. Color calibration supports the PRCiLITE version of LightSpace CMS by Light Illusion.

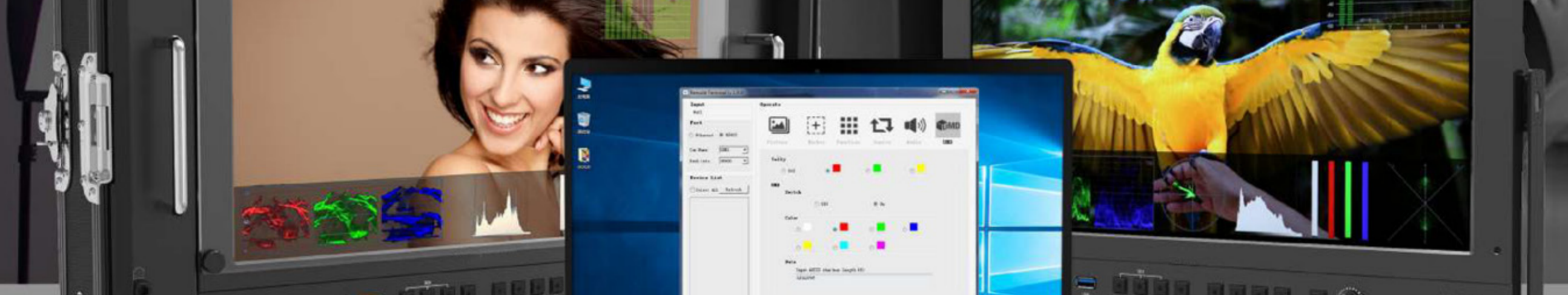


Color Temperature

According to the different senses of the pictures, filmmaker have their own preferences for different color temperatures. The default is 3200K / 5500K / 6500K / 7500K / 9300K five color temperature conditions, can also be customized according to user needs.

Gammas

Gamma redistributes tonal level closer to how our eyes perceive them. Since Gamma value is adjusted from 1.8 to 2.8, more details would be left to describe the dark tones where the camera is relatively less sensitive.



Remote Control Application

Connect your computer to control the monitor via applications. The interfaces of RS422 In and RS422 Out can realize synchronization control of multiple monitors.

LAN / RS422
 Select an appropriate port from LAN or RS422 to connect to the user's operating interface, allowing the application to identify the monitor before control.

- Picture**: Brightness, contrast, saturation, tint, sharpness, backlight and color temperature can be controlled in this pattern.
- Marker**: Skip the complex menu options and select necessary marker directly.
- Function**: Includes waveform, histogram, and other features in this pattern.
- Source**: Switch between four different SDI signals and single HDMI signal.
- Audio**: Any audio channel can be matched and control level meter and audio vector.
- Tally/UMD**: Control the color of Tally, as well as the text format of the UMD.

Quad Split Multiview

In Quad-Split Multiview mode, any input signals can be selected and changed among 12G-SDI, 3G-SDI, HDMI2.0 and 12G-SFP+ Moreover, images can be differentiated with colorful borders to enhance the senses of monitoring.

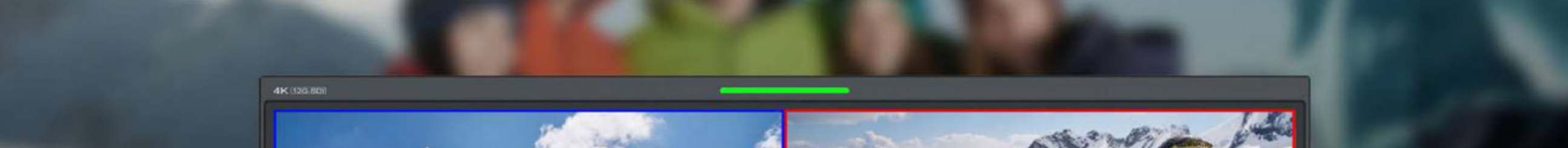


The four images are allowed to select the input signal source separately, and cinematographers can also quickly switch between each input signal via physical buttons.

In the mode of quad split multiview, user can select any one input signal for audio/sound output, for example, SDI, HDMI or SFP+.

Audio Vector (Lissajous)

The Lissajous shape is generated by graphing the left signal on one axis against the right signal on the other axis. It used to test the phase of mono audio signal and phase relationships depends on its wavelength. Complex audio frequency content will make the shape look like a complete mess so it is usually used in post production.



WAVEFORM

Quickly and easily check under or over exposure as well as color and white balance issues on pictures.

HISTOGRAM

A display that indicates how many of the pixels in a photo are at that given level of brightness.

FALSE COLOR

An image that depicts an object in colors that differ from those a photograph (a true-color image) would show. Supports ARRI, RED False color.

USER MARKERS

Adjusting the lines of four directions to shape any type of safety marker can also weaken the sense of existence of the image outside the marker.

PEAKING FOCUS

It highlights the areas that are in focus so you are able to quickly focus the camera and not miss crucial shots.

EXPOSURE

Areas of the image over a certain threshold are filled with a striped pattern to draw attention to highlight areas where too much light is falling on the image sensor.

Camera Auxiliary Functions

Provides plenty of auxiliary functions for taking photos and making movies, such as peaking, false color and audio level meter.



HDR



HDR OFF: Inaccurate exposure, reduced image detail, unsatisfactory viewing experience.
HDR ON: Enjoy sharper images, greater detail and richer colors.

3D LUT



3D-LUT is a table for quickly looking up and output specific color data. By loading different 3D-LUT tables, it can quickly recombine color tone to form different color styles.
 Built-in 3D-LUT, featuring 17 default logs and 6 user logs.

HDR

When HDR is activated, the display reproduces a greater dynamic range of luminosity, allowing lighter and darker details to be displayed more clearly. Effectively enhancing the overall picture quality. Support ST2084 300 / ST2084 1000 / ST2084 10000 / HLG.

3D LUT

3D-LUT is a table for quickly looking up and output specific color data. By loading different 3D-LUT tables, it can quickly recombine color tone to form different color styles.
 Built-in 3D-LUT, featuring 17 default logs and 6 user logs.

Easy-to-use

F1-F4 user-definable buttons to custom auxiliary functions as shortcut, such as peaking, underexpose and overexpose. Use the Dial to select and adjust the value among of sharpness, saturation, tint and volume, etc.



15.6" Base Mount (15.6"/23.6"/28"/31.5")
Gimbal Bracket (15.6")
Carrying Case (15.6"/23.6"/28")
Rack Mount Bracket (15.6")

SPECIFICATIONS

	CM156-12G	CM236-12G	CM28-12G	CM315-12G
DISPLAY	Panel: 15.6"	23.6"	28"	31.5"
	Aspect Ratio: 16:9	3840x2160	300cd/m ²	350cd/m ²
	Brightness: 330cd/m ²	300cd/m ²	1000:1	1300:1
	Contrast: 1000:1	1000:1	178°/178°(H/V)	178°/178°(H/V)
	Viewing Angle: 176°/176°(H/V)	178°/178°(H/V)	178°/178°(H/V)	178°/178°(H/V)
	HDR: Supported Log formats: SLog2 / SLog3 / CLog / NLog / AmLog / JLog or User... Look up table (LUT) support: 3D LUT (cube format)	ST2084 300/1000/10000/HLG	Calibration to Rec-709 with optional calibration unit	Calibration to Rec-709 with optional calibration unit
VIDEO INPUT	SDI: 2x12G, 2x3G (Supported 4K-SDI Formats Single/Dual/Quad Link)	1x12G SFP+ (Fiber module for optional)	1xHDMI 2.0	1xHDMI 2.0
VIDEO LOOP OUTPUT	HDMI: 2x12G, 2x3G	1xHDMI 2.0	1xHDMI 2.0	1xHDMI 2.0
SUPPORTED FORMATS	SDI: 2160p/24/25/30/50/60, 1080p/24/25/30/50/60, 1080i/50/60, 720p/50/60, 720i/50/60, 480p/50/60, 480i/50/60, 360p/50/60, 360i/50/60, 288p/50/60, 288i/50/60, 216p/50/60, 216i/50/60, 144p/50/60, 144i/50/60, 108p/50/60, 108i/50/60, 72p/50/60, 72i/50/60, 48p/50/60, 48i/50/60, 36p/50/60, 36i/50/60, 24p/50/60, 24i/50/60, 18p/50/60, 18i/50/60, 12p/50/60, 12i/50/60, 9p/50/60, 9i/50/60, 6p/50/60, 6i/50/60, 4p/50/60, 4i/50/60, 3p/50/60, 3i/50/60, 2p/50/60, 2i/50/60, 1p/50/60, 1i/50/60	HDMI: 2160p/24/25/30/50/60, 1080p/24/25/30/50/60, 1080i/50/60, 720p/50/60, 720i/50/60, 480p/50/60, 480i/50/60, 360p/50/60, 360i/50/60, 288p/50/60, 288i/50/60, 216p/50/60, 216i/50/60, 144p/50/60, 144i/50/60, 108p/50/60, 108i/50/60, 72p/50/60, 72i/50/60, 48p/50/60, 48i/50/60, 36p/50/60, 36i/50/60, 24p/50/60, 24i/50/60, 18p/50/60, 18i/50/60, 12p/50/60, 12i/50/60, 9p/50/60, 9i/50/60, 6p/50/60, 6i/50/60, 4p/50/60, 4i/50/60, 3p/50/60, 3i/50/60, 2p/50/60, 2i/50/60, 1p/50/60, 1i/50/60	SDI: 16ch 48kHz 24-bit	8ch 24-bit
Audio In/Out (48kHz PCM Audio)	HDMI: 8ch 24-bit	3.5mm: 2	1	1
REMOTE CONTROL	Built-in Speakers: 1	1	1	1
	RS422: 1	1	1	1
	LAN: 1	1	1	1
POWER	Input Voltage: DC 12-24V	DC 12-24V	≤60W (15V)	≤74W (15V)
	Power Consumption: ≤32.5W (15V)	≤54W (15V)	V-Lock or Anton Bauer Mount	14.8V nominal
	Compatible batteries: 14.8V nominal	0°C-40°C		
ENVIRONMENT	Input Voltage: 12V	0°C-40°C		
	Operating Temperature: -20°C-60°C			
OTHER	Storage Temperature: 393 × 267 × 51.4mm	567 × 376.4 × 45.7mm	638 × 414.3 × 54.4mm	717.5 × 454.7 × 47.4mm
	Dimension(L/W/D): 393 × 267 × 51.4mm	567 × 376.4 × 45.7mm	638 × 414.3 × 54.4mm	717.5 × 454.7 × 47.4mm
	Weight: 2.9kg	7.4kg	8.6kg	13.0kg

Note: Due to constant effort to improve products and product features, specifications may change without notice.

ACCESSORIES



STANDARD
 15V DC Adapter, VESA Mount Plate, Battery Plate, Base Bracket, USB Flash Disk

OPTIONAL
 Gimbal Bracket (15.6"), Carrying Case + Sunshade (15.6"/23.6"/28"), Rack Mount Bracket (15.6"/23.6"/28"), Acrylic Screen Protector (15.6"), SFP Optical Fiber Module (15.6"/23.6"/28"/31.5")